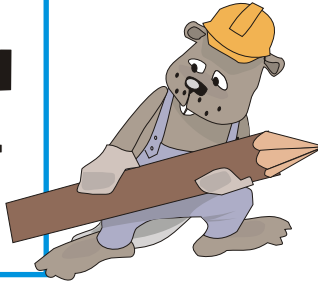


# FLAMBEAU LANDING HOMESITES SUBDIVISION

## 4TH ADDITION - Lots 2, 3 & 4

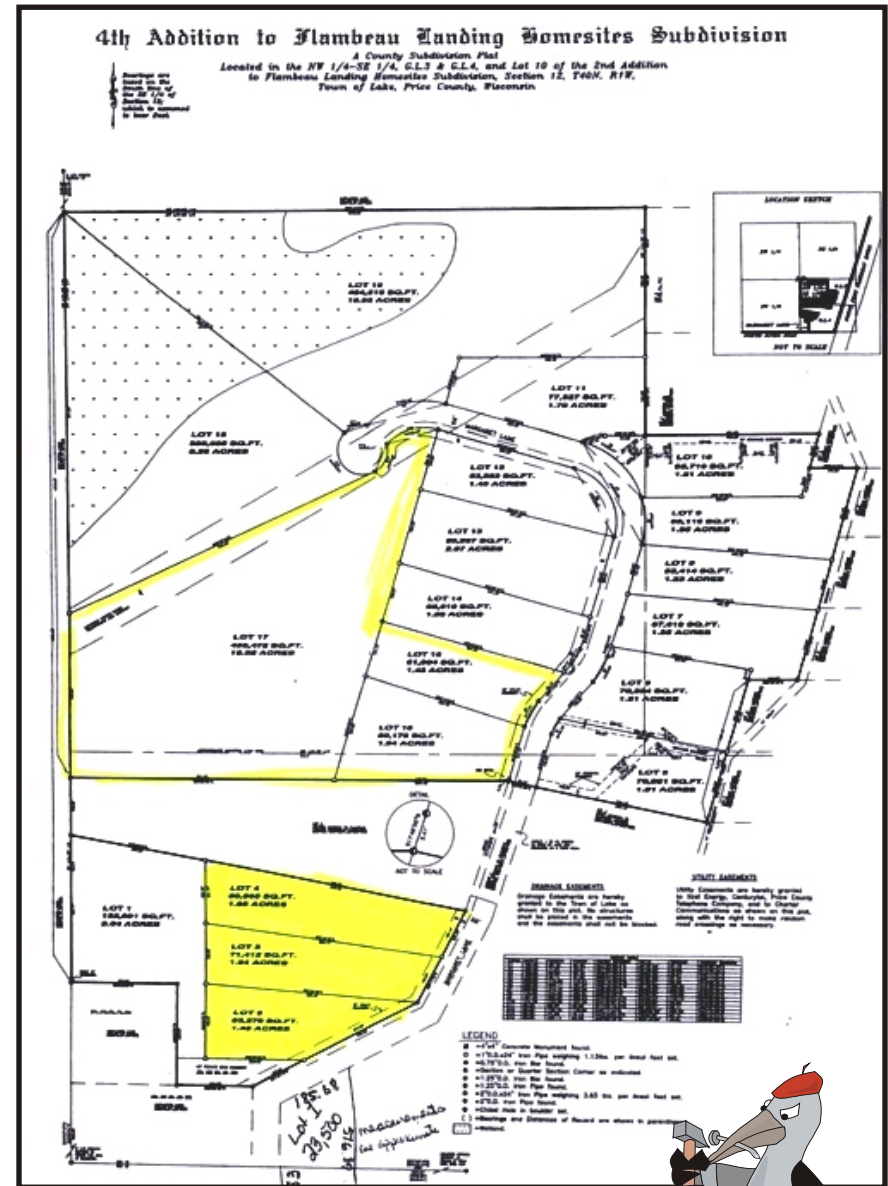
Park Falls (Town of Lake), Price County  
(ML#108174)



If you're looking for that special location to build your new vacation or year-round home – look no further! These three parcels are heavily wooded. **The three lots contain 4.94 Acres.** Utilities are readily available on Margaret Lane, which is a paved road. Restrictive Covenants are in place. In an area of many fine homes. **Purchase now and you'll be ready to build this Spring.**

OFFERED AT: **\$57,400.**

**Lots 15, 16 & 17 (outlined in yellow) may be purchased with 2, 3 & 4 for a total of \$134,000.**







**schmidt haus  
realty, inc.**  
P.O. Box 98, 156 Hwy. W  
Manitowish Waters, WI 54545  
Email: [judisa@shrealty.com](mailto:judisa@shrealty.com)  
Judi Schmidt Arnold, REALTOR®, Broker/Owner

**CALL: (715) 904-0072 or 800-241-5680**  
**Cell: 715-904-0033**  
**www.shrealty.com**



*"Where Clients & Customers Become Friends!"*



JSA Graphics